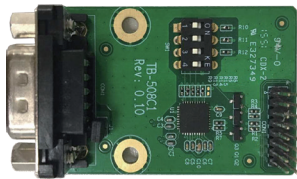


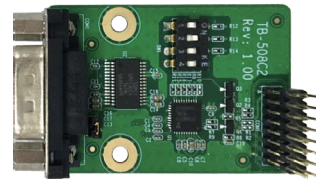
## ▶ TB-508 Series (For SBC-7109/SBC-7112)

### ■ TB-508C1



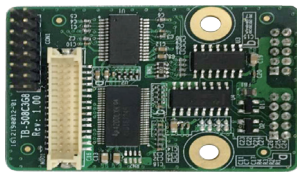
- 1 x RS-232/422/485 For SBC-7109/SBC-7112

### ■ TB-508C2



- 2 x RS-232 (RX, TX) For SBC-7112

### ■ TB-508C3G8



- 3 x RS-232/1 x 8-bit GPIO(4xDI,4xDO) For SBC-7112

### ■ TB-508CAN1



- 1 x CAN For SBC-7109/SBC-7112